

























TORRANCE MEMORIAL  
MEDICAL CENTER



Melanie & Richard  
Lundquist  
Tower

Lomita

TORRANCE MEMORIAL  
MEDICAL CENTER

←  
**Emergency**  
BASE EMERGENCY MEDICAL  
SERVICES - PHYSICIAN ON DUTY

← Main Entry

↑ Main Parking

↑

↓

Public Parking

TORRANCE MEMORIAL MEDICAL CENTER



STOP



FIRE LANE NO PARKING

FIRE LANE NO PARKING

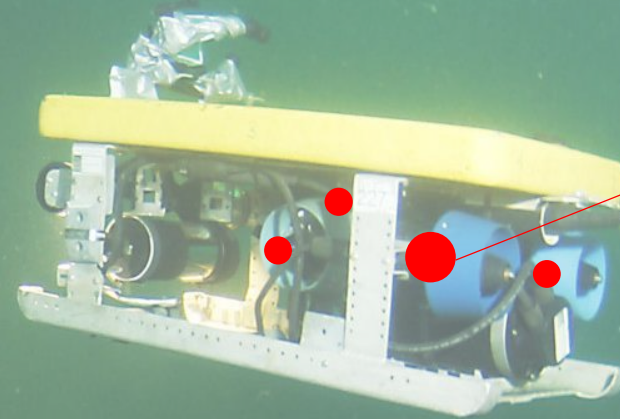




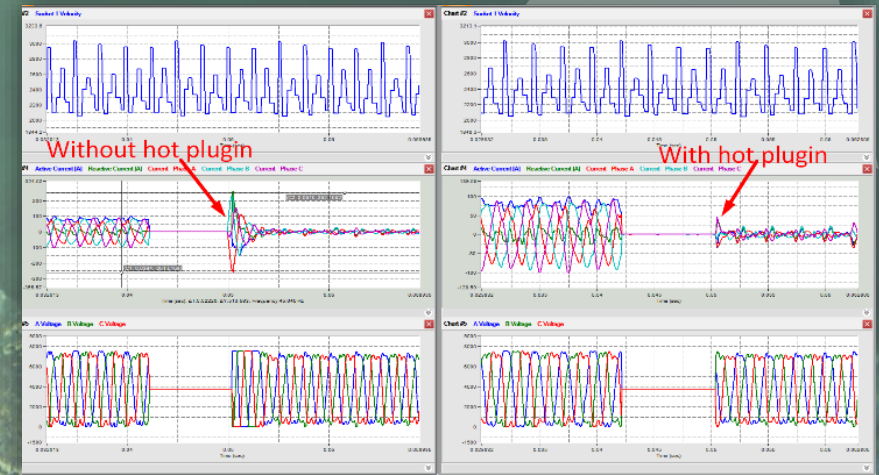
# Underwater

Helping Remotely Operated Vehicles (ROVs) with high speed thrusting, down to 6000m below sea level

TRO-R16/800S



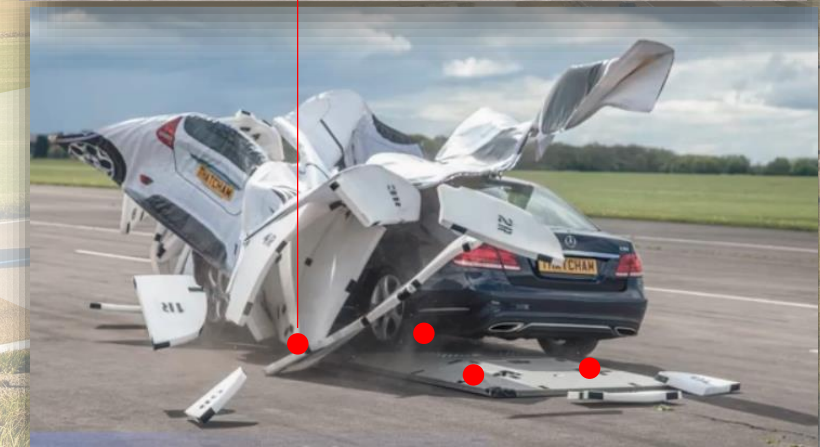
Thruster Start-Up Against Water Current with Elmo's Hot Plugging



# Automotive

Driving Autonomous Robotic Platform  
(*Guided-Soft-Targets*) for *Advanced Driver Assistance Systems (ADAs)* – testing anti collision, lane departure, etc.

Gold Drum  
100A/100V



High power, in a low form factor, and absolute ruggedness



# Clean Energy

Turbine Mounted Wind LIDAR – Helping to maximize turbine output

G-WHI2.5/100



High accuracy voice coil movement with high bandwidth, and control algorithms to handle wind disturbances

# Semiconductor & Electronics

Advanced Semiconductor processing,  
transfer, and inspection

Move & Settle Untitled02 G150-192.168.1.150

Experiment Name: Experiment1 Experiment Path: C:\Users\nimrod\Documents\Elmo Application Studio\Move & Settle\Machine 1

#	Target	Reps	Prof. Time	Req. Time	Min MT	Max MT	Avg MT	% Pass
1	v01	5/5	0.115	0.25	0.215	0.215	0.215	100%
2	Y	5/5	0.185	0.25	0.205	0.205	0.205	100%
3	X	5/5	0.256	0.5	0.356	0.356	0.356	100%
4	Z	4/5	0.199	0.25	0.299	0.299	0.299	0%

General: Dwell Time [msec] 0, Record Tests  Admin. Motion

Axis: Z

Acc. [cnt/sec<sup>2</sup>] 100000, Dec. [cnt/sec<sup>2</sup>] 100000, Vel. [cnt/sec] 10000, Jerk [cnt/sec<sup>3</sup>] 2E+0

Motion Settings: Apply to All Axes, Recording Signals: Edit Signals...

Settings: Experiment

Current Test Process: Executing Rep. 4 of 5, Elapsed Time: 00:00:02, Remaining Time: 00:00:01

Entire Experiment: Executing Test 4 of 4, Elapsed Time: 00:00:20, Remaining Time: 00:00:00

Current Positions: X: 10000 Y: 10000 Z: 10013



Gold Solo  
Whistle

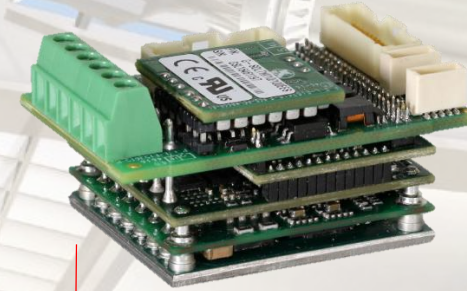


Gold DC  
Whistle

Fast Settling Servo speeds up wafer testing,  
with dedicated move & settle EASII tool

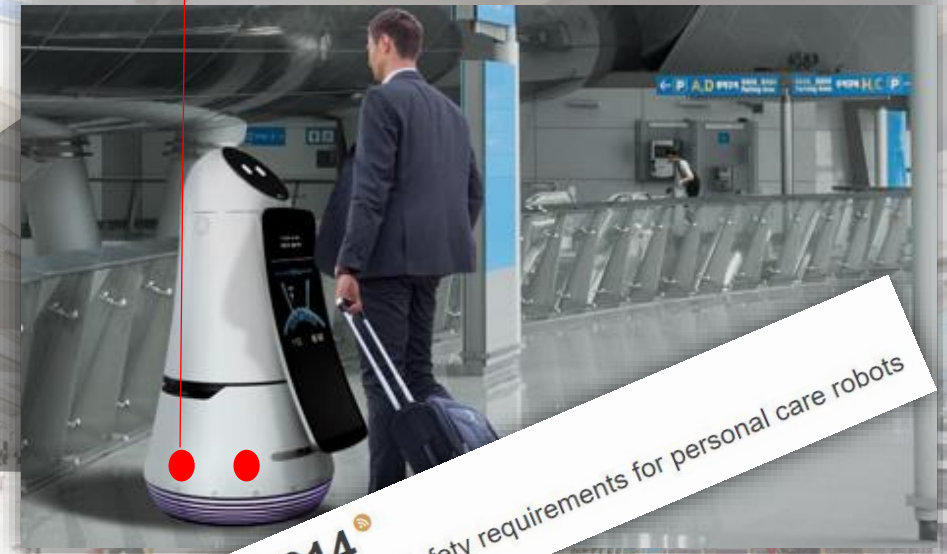
# Smart Robotics

Driving compact, battery operated mobile robots and AGVs through airports, hospitals, and factories.



Gold Solo  
Twitter

Beyond size and efficiency...  
STO needed to achieve ISO13842



ISO 13482:2014  
Robots and robotic devices -- Safety requirements for personal care robots



Gold Hornet (ExtrIQ product)



# Commercial Aviation

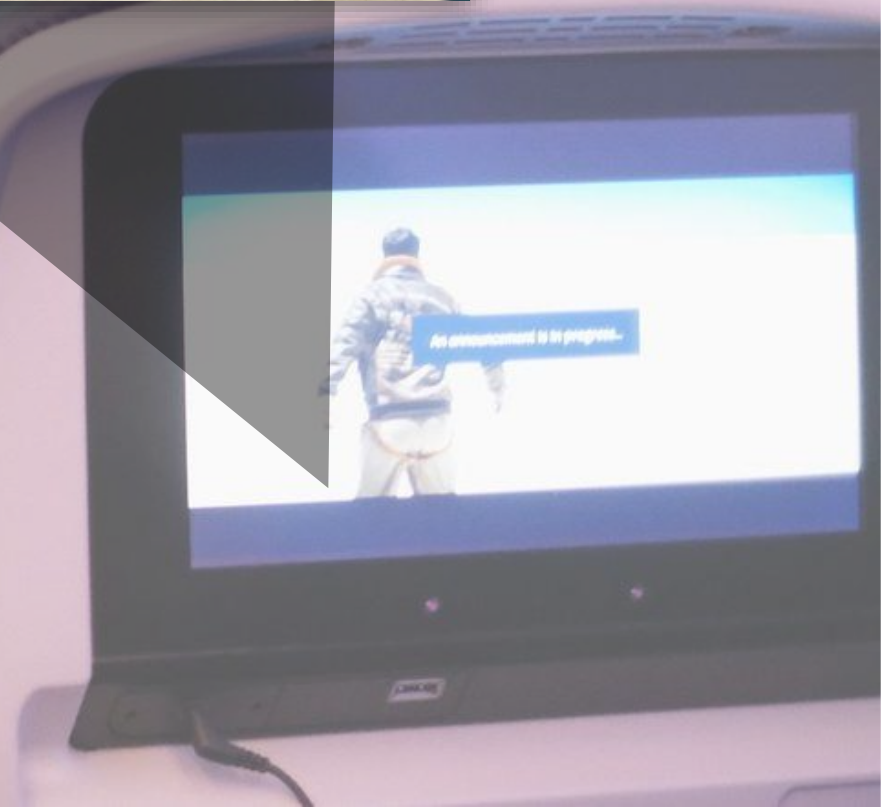
Satellite-tracking directional antennas providing flights with reliable in flight internet wherever they are



**Gold Drum HV (High Voltage - 900VDC)**  
**Super compact, direct to mains, up to 65kW**

## Entertainment

High power density,  
onboard intelligence,  
and drive connectivity  
push robotic camera  
dolly to shoot extreme  
live-action footage





Platinum  
Maestro



Gold  
Twitter

# Medical

From minimally invasive robotic assisted surgery, to steerable robotic devices





**MACHINE**



**DEVICE**



**ROBOT**



**INSTRUMENT**

**VEHICLE**



**SYSTEM**

